

PART OF 334.883 ACRES  
P.F.D.DEVELOPMENT P.L.L.  
O.R.VOL.967, PG.251  
O.R.VOL.967, PG.255

# RECORD PLAN WRIGHT CYCLE ESTATES

## SECTION ELEVEN A PLANNED UNIT DEVELOPMENT CONTAINING 12.352 ACRES

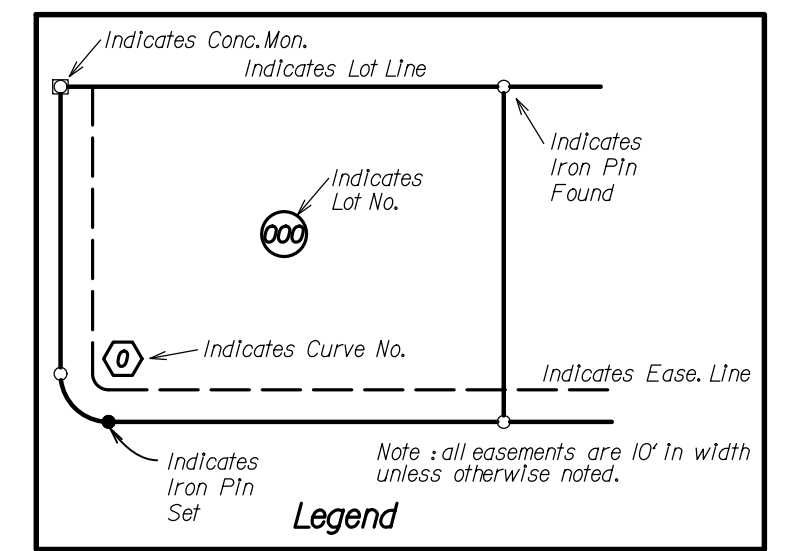
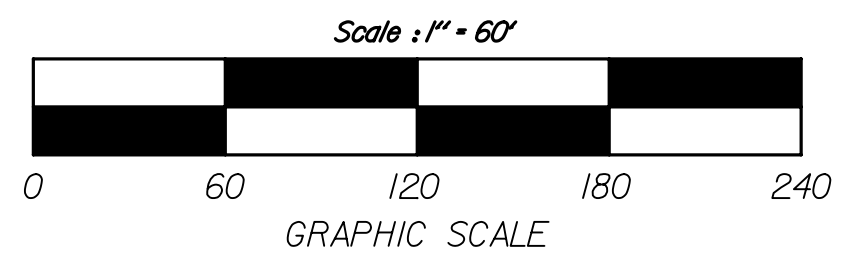
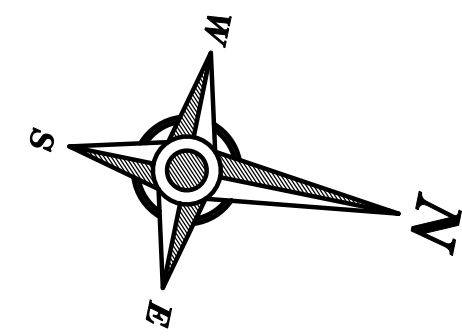
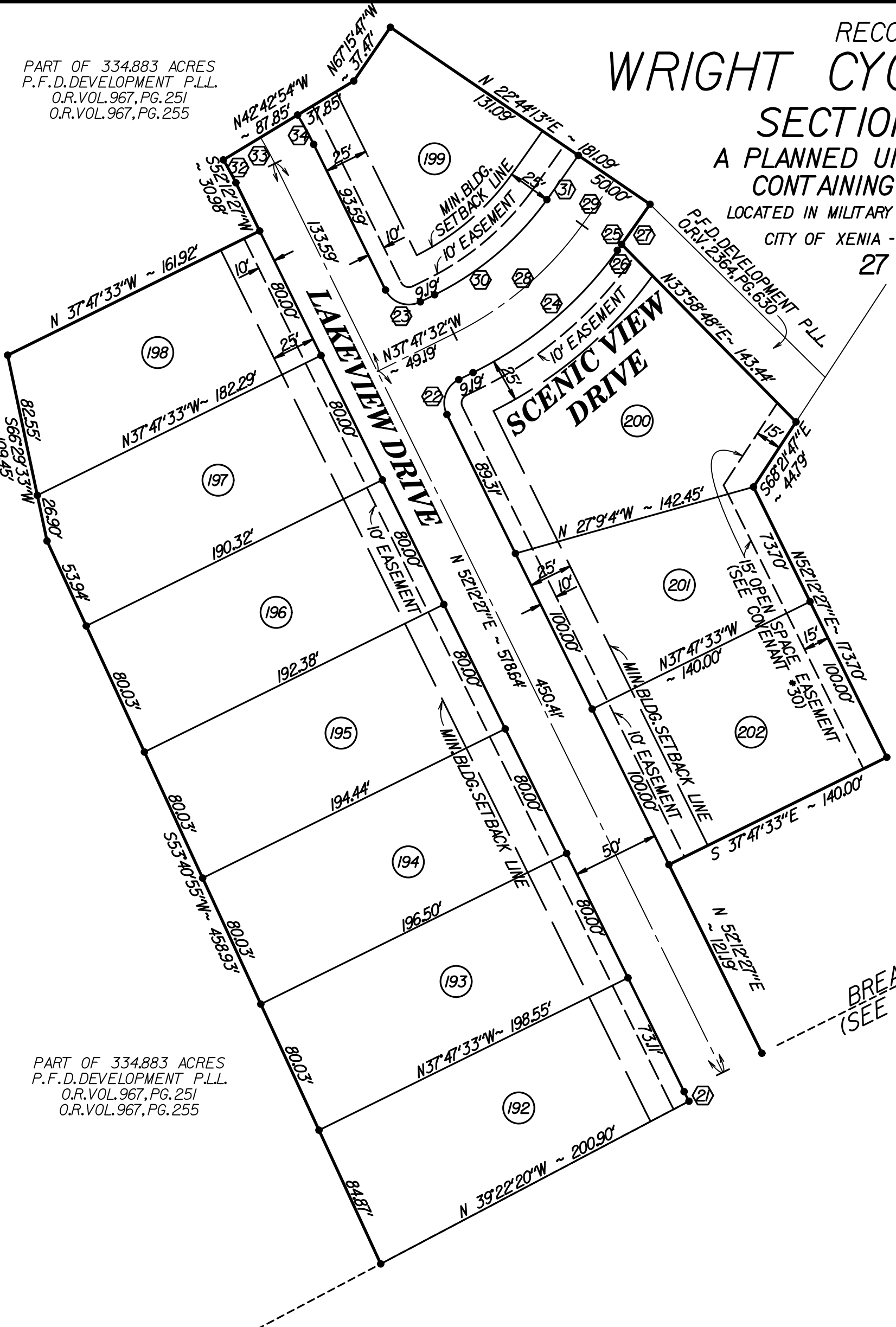
LOCATED IN MILITARY SURVEY NO. 2263 & 2264  
CITY OF XENIA - GREENE COUNTY, OHIO  
27 LOTS

LOT AREAS	
NO.	AREA IN SF.
192	16384
193	15802
194	15637
195	15473
196	15308
197	15065
198	13769
199	13961
200	20223
201	12159
202	14000
R/W	89364
TOTAL	538075

CURVE DATA				
NO.	RAD.	ARC.L	DELTA	CHORD
21	R=225.00'	6.20'	1-134'47"	LCH=N 51'25'4"E~ 6.20'
22	R=15.00'	23.56'	1-90'0"0"	LCH=S82'47'33"E~ 21.21'
23	R=15.00'	23.56'	1-90'0"0"	LCH=S71'27'27"W~ 21.21'
24	R=225.00'	110.12'	1-28'2'28"	LCH=S51'48'47"E~ 109.02'
25	R=2363.04'	32.56'	1-0'47'22"	LCH=N66'13'42"W~ 32.56'
26	R=2363.04'	4.24'	1-0'6'10"	LCH=N65'53'6"W~ 4.24'
27	R=2363.04'	28.32'	1-0'4'12"	LCH=S66'16'47"E~ 28.32'
28	R=200.00'	97.88'	1-28'2'28"	LCH=S51'48'47"E~ 96.91'
29	R=2338.04'	31.94'	1-0'46'57"	LCH=N66'13'30"W~ 31.93'
30	R=175.00'	85.65'	1-28'2'28"	LCH=S51'48'47"E~ 84.79'
31	R=2313.04'	31.31'	1-0'46'32"	LCH=N66'13'17"W~ 31.31'
32	R=175.00'	15.04'	1-4'55'22"	LCH=N49'44'46"E~ 15.03'
33	R=200.00'	17.18'	1-4'55'22"	LCH=N49'44'46"E~ 17.18'
34	R=225.00'	19.33'	1-4'55'22"	LCH=N49'44'46"E~ 19.33'

CITY OF XENIA  
O.R.VOL.2166, PG.526

BEARING BASIS:  
WRIGHT CYCLE ESTATES  
SECTION ONE  
PLAT CAB.VOL.30  
PGS.319A-320B



PART OF 334.883 ACRES  
P.F.D.DEVELOPMENT P.L.L.  
O.R.VOL.967, PG.251  
O.R.VOL.967, PG.255

Prepared By: SHEET 2 of 5

**SCHAEFFER, AMOS & HUGHES, LLC**  
ENGINEERS  
SURVEYORS  
1253-G Lyons Road Dayton, Ohio 45458 Tel: (937) 434-5104